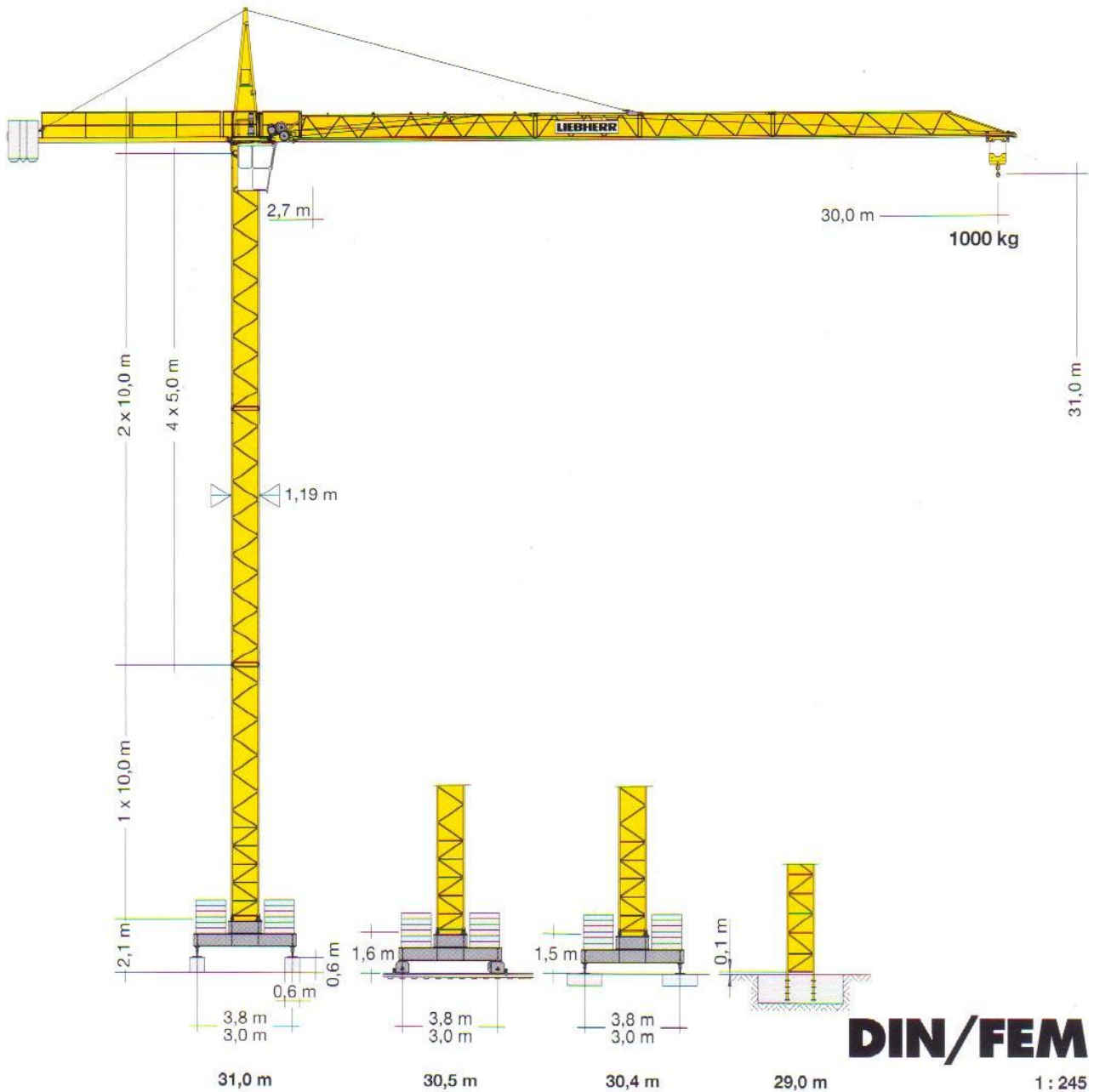


# Turmdrehkran 30 LC

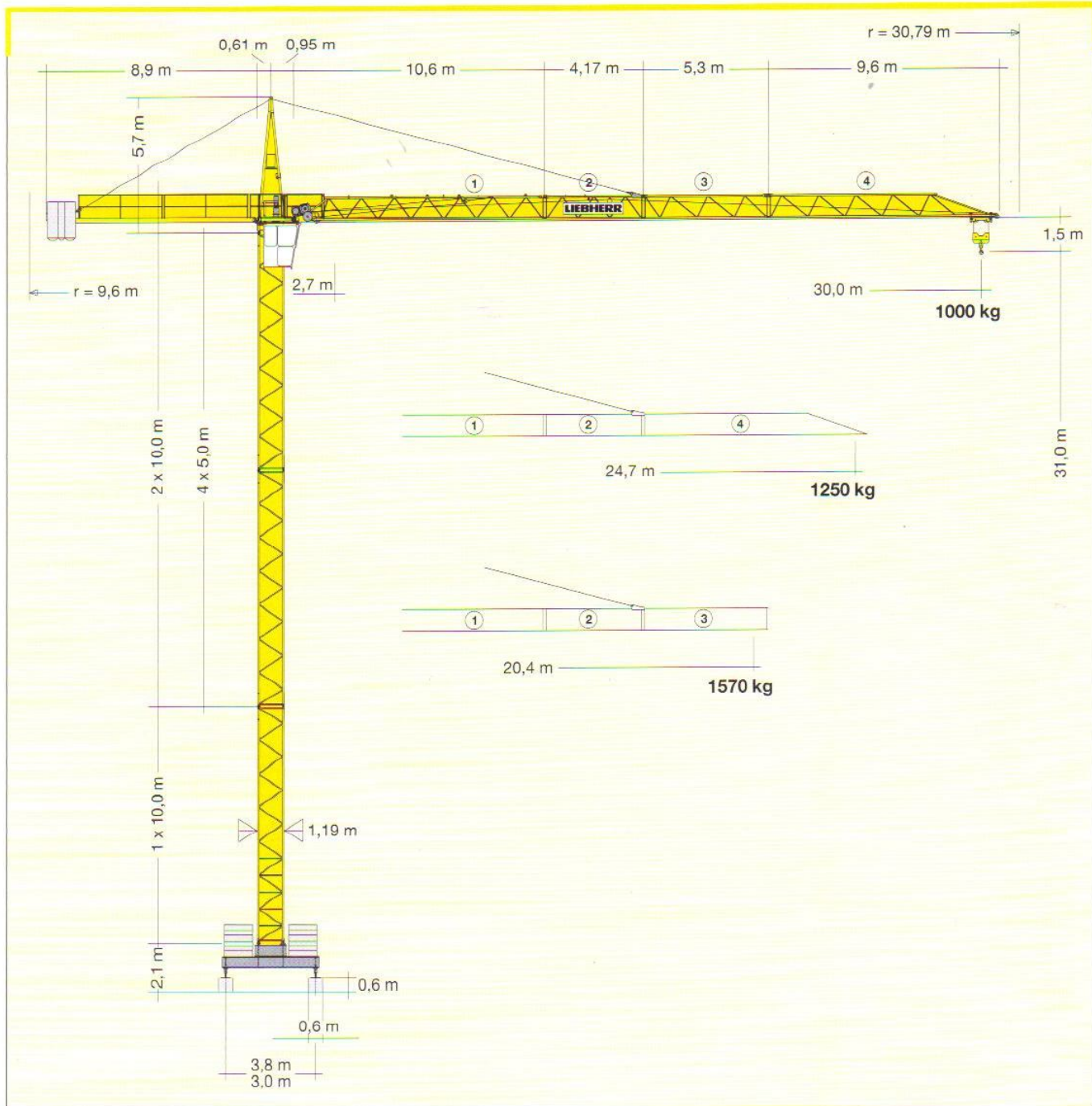
Tower Crane / Grue à tour / Gru a torre  
Grúa torre / Guindaste de torre

**GrumonTe**  
aluguer e venda de gruas\_lda



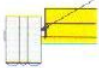

**GrumonTe**  
aluguer e venda de gruas\_lda

# LIEBHERR



## Gewicht

Weight / Poids / Peso / Peso / Pesos

Fundamentblöcke Foundation blocks Blocs de fondation Blocchi di fondazione Blocos de fundação Bloques de apoyo	10000 kg	Zentralballast Central ballast Lest de base Zavorra centrale Lastro central Lastre central		 (Ausl. 30 m) 3.900 kg
		<input type="checkbox"/> 3,8 m <input checked="" type="checkbox"/> 20.000 kg	<input type="checkbox"/> 3,0 m <input checked="" type="checkbox"/> 30.000 kg	
<input type="checkbox"/> 3,8 m <input checked="" type="checkbox"/> 20.000 kg		<input type="checkbox"/> 3,0 m <input checked="" type="checkbox"/> 35.000 kg		
	10900 kg			

# Ausladung und Tragfähigkeit

Radius and capacity / Portée et charge / Sbraccio e portata / Alcances y cargas / Alcance e capacidade de carga





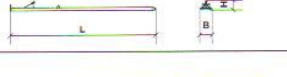


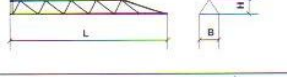


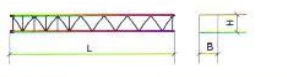





# Antriebe

Driving units / Mécanismes d'entraînement / Azionamenti / Mecanismos / Mecanismos

	U/min 0 - 0,8 sl./min tr./min	1 x 2,2 kW EDC
	19,0 / 33,0 m/min	0,7 / 1,2 kW
	20,0 m/min	2 x 2,2 kW
	<b>kVA</b>	11,0 kW 20,0

		Stufe / Step Cran / Marcia Marcha / Marcha	kg	m/min
		2,2 / 9,0 / 11,0 kW WIW 200 MZ 404		
		3 Lagen Layers Couches Strati Camadas Capas		
	44,0 m LS-Trommel	1	2500	5,0
		2	2500	20,0
		3	1300	40,0
		4 Lagen Layers Couches Strati Camadas Capas		
	60,0 m LS-Trommel	1	2400	5,2
		2	2400	21,0
		3	1200	42,0

Montagegewichte: siehe Betriebsanleitung. / Erection weights: see instruction manual. / Poids de montage: voir manuel de service.  
Pesi di montaggio: vedasi le istruzioni sull'uso. / Pesos de montagem: vejã-m-se es instruções p. uso. / Peso para el montaje: según manual.

Pos. Item Rep. Voce Pos. Ref.	Anz. Qty. Qta. Cant. Cant.				L (m)	B (m)	H (m)	kg*
		<b>Kabine + Steuerstand</b>						
		Cabin + Seat			1,87	1,12	2,18	440
1	1	Cabine + fauteuil						
		Cabin + poltrona						
		Cabine + cadeira						
		Cabin + butaca						
2	1	<b>Turmspitze mit Kud-Auflage</b>						
		Tower head section with slewing ring support			5,76	1,37	1,80	1450
		Porte-flèche avec pivot						
		Testa porta-braccio						
		Cabeça de apoio de lança						
		Cabeza de torre						
3	1	<b>Gegenausleger / Counter-jib</b>						
		Contre-flèche / Controbaccio			8,98	0,76	0,63	870
		Contra-lança / Contrapluma						
4	1	<b>Ausleger-Anlenkstück</b>						
		Jib heel section			10,84	1,48	1,38	① 1495
		Pied de flèche						
		Settore articolato di braccio						
		Base articulada de lança						
		Pluma tramo primero						
5	1	<b>Ausleger-Zwischenstück</b>						
		Intermediate jib section			4,32	0,86	1,10	② 220
		Elément interm. de flèche			5,45	0,86	0,99	③ 210
		Spezzone di braccio						
		Peça suplementar da lança						
		Tramo intermedio pluma						
6	1	<b>Ausleger-Kopfstück</b>						
		Jib head			9,71	0,86	1,00	④ 340
		Pointe de flèche						
		Punta freccia						
		Cabeça de lança						
		Tramo punta de pluma						
7	1	<b>Podeste / Platforms</b>						
		Plates-formes / Plattaforma			1,75	1,33	0,75	50
		Plataforma / Plataforma			1,80	0,33	1,60	155
8	1	<b>Turmstück oben</b>						
		Tower section upper			10,10	1,14	1,14	1050
		Element de mât, supérieur			5,10	1,14	1,14	565
		Elemento di torre superiore						
		Torre superior						
		Torre superior						
9	1	<b>Turmstück unten</b>						
		Tower section lower			10,12	1,19	1,19	1150
		Element de mât, inférieur						
		Elemento di torre inferiore						
		Torre inferior						
		Torre inferior						
10	1	<b>Unterwagen-Rahmen</b>						
		Undercarriage frame			4,15	0,65	1,35	1640
		Cadre de châssis			3,35	0,65	1,35	1390
		Intelaiatura carro						
		Estrotaura do carrinho						
		Bastidor carretón						
11	2	<b>Tragholm / Arm</b>						
		Longeron / Longherone			4,10	0,46	0,49	685
		Travessa / Brazo			3,30	0,46	0,49	512
12	4	<b>Abstützung / Support</b>						
		Appui / Sostegni			0,42	0,40	0,40	44
		Apoios / Apoyos						
13	2	<b>Fahrschemel mit Antrieb</b>						
		Rail bogie with drive			0,78	0,84	0,53	297
		Bogie moteur						
		Telaio con gruppo propulsore						
		Quadro sem grupo de propulsão						
		Caja rodillo motriz						
14	2	<b>Fahrschemel ohne Antrieb</b>						
		Rail bogie without drive			0,66	0,30	0,51	204
		Bogie fou						
		Telaio senza gruppo propulsore						
		Quadro com grupo de propulsão						
		Caja rodillo conducido						
15	-	<b>Seile und Kleinteile / Small parts and ropes</b>			-	-	-	330
		Accessoires et câbles / Accesorii cavi						
		Accesorios e cabos / Accesorios y cables						

\* Einzelgewichte. / Single weights. / Poids individuels. / Pesi di componenti. / Pesos de peças componentes. / Pesos unitarios.

**Konstruktionsänderungen vorbehalten!**  
Subject to alterations! / Sous réserves de modifications!  
Si fa riserva di modifiche! / Salvo modificação da construação!  
¡Sujeto a modificaciones!

**Sämtliche Angaben erfolgen ohne Gewähr.** / This information is supplied without liability.  
Ces renseignements sont sans garantie. / Le indicazioni contenute si intendono salvo errori ed omissioni.  
Declinamos toda responsabilidad derivada de la información proporcionada. / Declinamos qualquer  
responsabilidade quanto à informação fornecida.