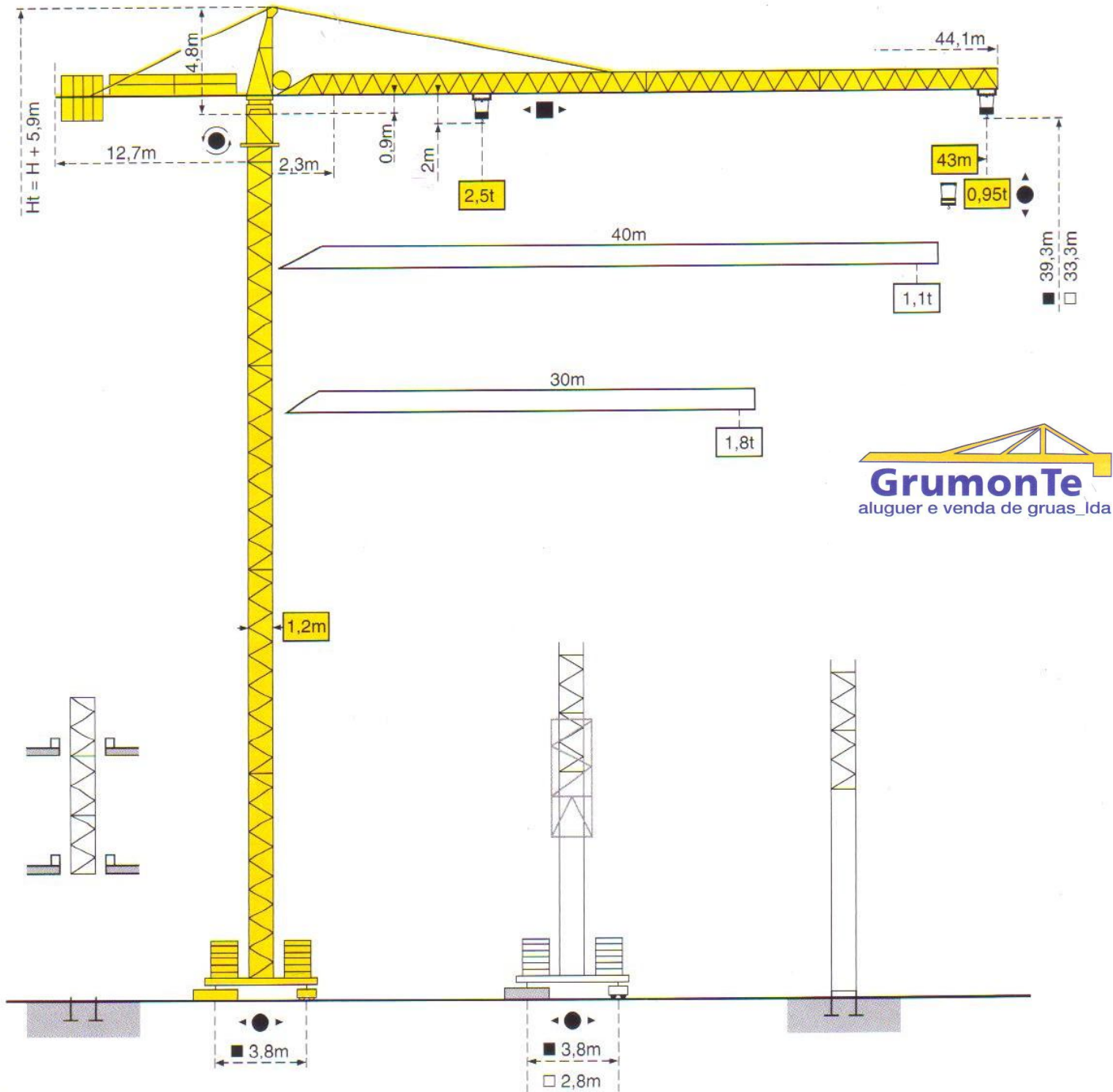


CITY CRANE MC 60



CITY CRANE MC 60

LHW 1



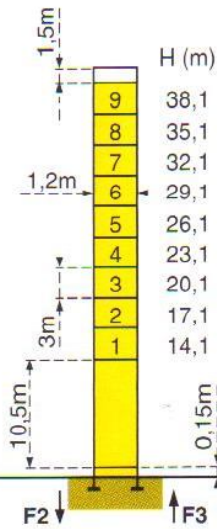
Mats - Maste - Masts - Mástil - Torre



□ 1,2m

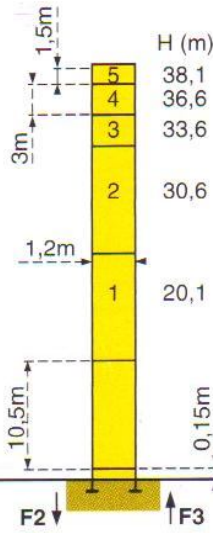
Flèche - Ausleger - Jib
Flecha - Braccio
30m → 43m

P 12A



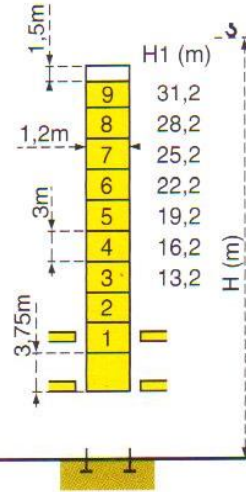
F2	● 57t	■ 83t
F3	● 43t	■ 70t
	⊕ 19,5t	

P 12A



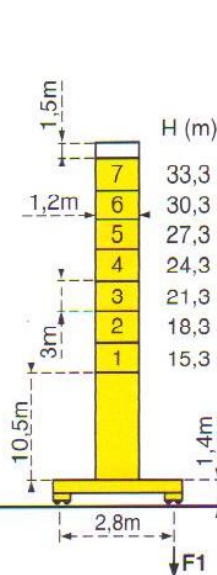
F2	● 57t	■ 83t
F3	● 43t	■ 70t
	⊕ 19,5t	

BA 25A



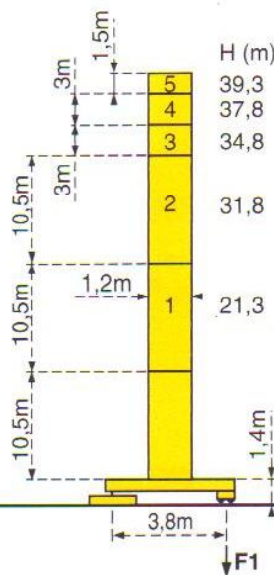
Voir ci-contre
Siehe nebenstehend
See opposite
Ver pagina opuesta
Vedi pagina accanto

ZE 12A



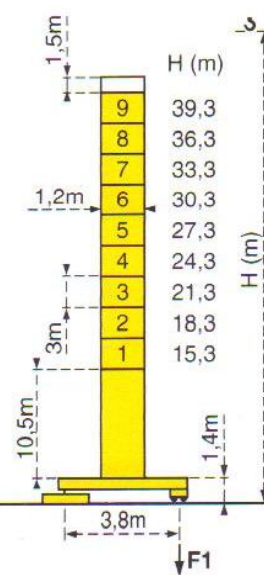
F1	● 40t	■ 49t
	⊕ 22,5t	

ZF 12A



F1	● 38t	■ 51t
	⊕ 24,5t	

ZF 12A



F1	● 38t	■ 51t
	⊕ 24,5t	

F = Réactions - Eckdrücke - Reactions - Reacciones - Reazioni

Courbes de charges - Lastkurven - Load diagrams - Curvas de cargas - Curve di carico

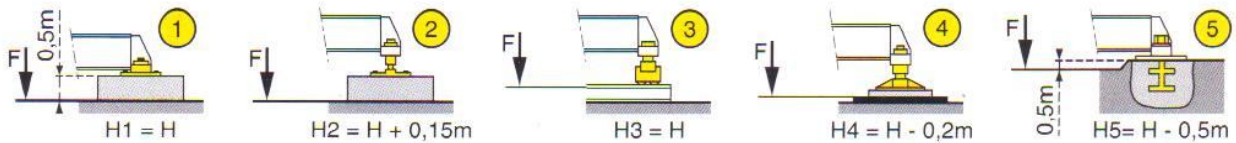
Flèche Ausleger Jib Flecha Braccio

	19,9	22	25	27	30	32	35	37	40	41	43	m
43 m	2,5	2,22	1,9	1,73	1,52	1,4	1,25	1,16	1,04	1,01	0,95	t

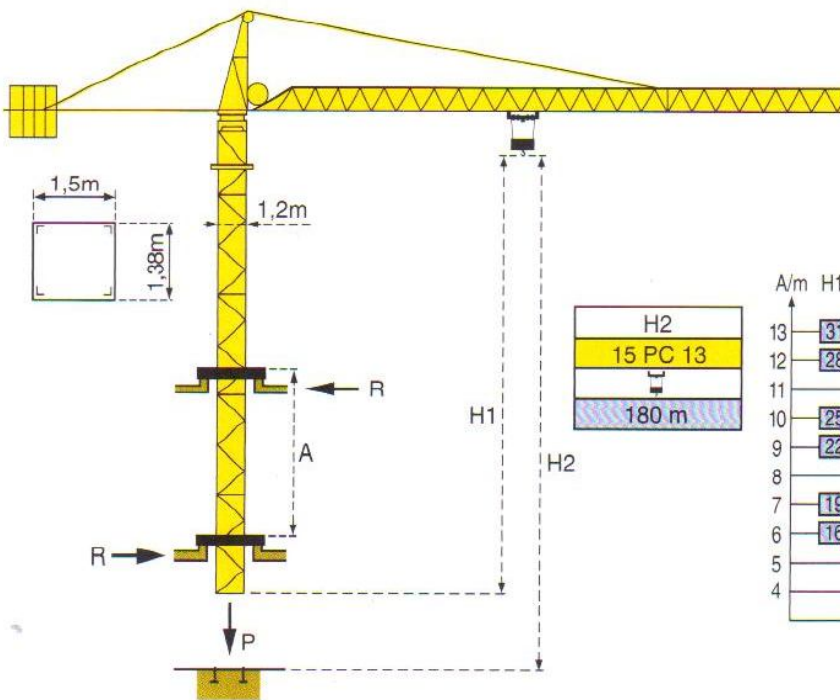
	20,6	22	25	27	30	32	35	37	40	m
40 m	2,5	2,31	1,98	1,81	1,59	1,46	1,31	1,21	1,1	t

	22,7	25	27	30	m
30 m	2,5	2,24	2,04	1,8	t

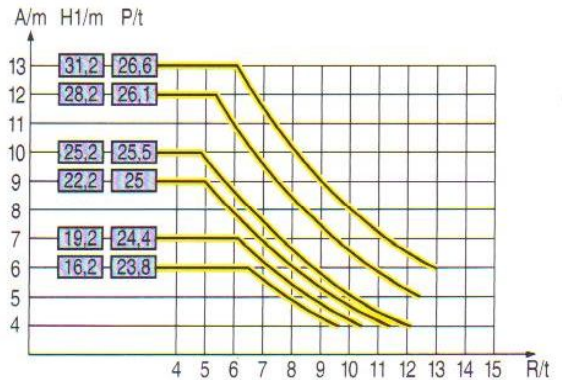
ZE
ZF



Télescopage sur dalles - Kletterkrane im Gebäude - Climbing crane Telescopage gruas trepadoras - Gru in cavedio



BA 25A



A Distance entre cadres	A Abstand zwischen den Rahmen	A Distance between collars	A Distancia entre marcos	A Distanza fra i telai
H1 Hauteur grue	H1 Kranhöhe	H1 Crane height	H1 Altura grúa	H1 Altezza gru
P Poids de la grue (en service)	P Krangewicht (in Betrieb)	P Crane weight (in service)	P Peso de la grúa (en servicio)	P Peso della gru (in servizio)
R Réaction horizontale	R Horizontalkräfte	R Horizontal reaction	R Reaccion horizontal	R Reazione orizzontale










- | | | | | |
|--|---|---|---|--|
| ● En service | ● In Betrieb | ● In service | ● En servicio | ● In servizio |
| ■ Hors service | ■ Ausser Betrieb | ■ Out of service | ■ Fuera de servicio | ■ Fuori servizio |
| ⊕ A vide sans lest avec flèche et hauteur maximum. | ⊕ Ohne Last und Ballast mit Maximalausleger und | ⊕ Without load and ballast with longest jib maximum height. | ⊕ Sin carga, sin lastre con flecha y altura máxima. | ⊕ A vuoto senza zavorra e con braccio massimo e altezza massima. |

LHW 1

GrumonTe
aluguer e venda de gruas_lda

POTAIN CITY CRANE MC 60

Mécanismes - Antriebe - Mechanisms - Mecanismos - Meccanismi

				m/min	t		ch -PS hp	kW
Levage <i>Heben</i> Hoisting <i>Elevación</i> Sollevamento	15 PC 13 		  	7	2,5	360 m	15	11
				21	2,5			
				42	1,3			
Distribution - Katzfahren - Trolleying <i>Distribución - Distribuzione</i>		3 D2 V5		21 - 42			3	2,2
Orientation - Schwenken - Slewing <i>Orientación - Rotazione</i>		RCV 40		0 → 0,8 tr/min U/min-rpm			6	4,5
Translation - Kranfahren - Travelling <i>Traslación - Traslazione</i>	ZE - ZF 	TVD 324 C1		26			2 x 4	2 x 2,9
Réseau - Netzstrom - Mains supply - Red - Rete elettrica						CEI 38	400V (+5%,-10%) 50Hz	
Puissance électrique nécessaire - Anschlusswert - Necessary electric power <i>Potencia eléctrica necesaria - Potenza elettrica necessaria</i>							15 PC : 25 KVA	
Groupe électrogène - Stromaggregat - Generator set - Grupo electrogeno - Gruppo elettrogeno							*	

*Nous consulter - Auf Anfrage - Consult us - Consultamos - Consultateci

Conforme aux directives CEE 84/534 et 87/405 sur le niveau acoustique - Gemäss EWG-Richtlinien 84/534 und 87/405 für den Schall- Leistungspegel
 In compliance with the EEC 84/534 and 87/405 instructions on noise level - Conforme con las directivas CEE 84/534 y 87/405 sobre el nivel acustico
 Conforme alle direttive CEE 84/534 e 87/405 sul livello acustico



NF E 52081 - 82

Copyright.Reproduction interdite © POTAIN 1994

POTAIN 

GRUPE LEGRIS INDUSTRIES

18.Rue de Charbonnières, B.P. 173-F 69132 ECULLY Cedex

Tél. 72.20.20.20 - Télex 375 213 - Fax 72.20.20.00

POTAIN GmbH Deutschland Tel : 06.105.704.0
 POTAIN U.K. Great Britain Tel : 0895.44.52.61
 Simma POTAIN Italia Tel : 02.97.96.71
 POTAIN Portugal Portugal Tel : 02.968.08.89


GrumonTe
 aluguer e venda de gruas_lda

CITY CRANE MC 60

Réf. 1994.29 LHW 1

Modifiche riservate

Modificaciones reservadas

Subject to modification

Änderungen vorbehalten

Modifications réservées

Printed in France

Réalisation SODIPE